

Magilabs Oy (Ltd.)
Postikatu 10E
04400 Järvenpää
FINLAND

Software version: 1.5.1.2
Document version: 1.02

Instructions for updating EXA / J-Screen instrument software to version 1.5.1.2

1. Create a backup copy of the content of your EXA/J-Screen USB flash drive on another computer.
2. Delete the content of your EXA/J-Screen USB flash drive.
3. Download the zip file
from: <http://www.gemmoraman.com/Portals/0/Documents/EXA.zip>
4. Extract the content of the EXA.zip file in an empty folder on your PC.
5. Copy the content of the folder to your EXA/J-Screen USB flash drive. If you previously saved your own spectra on the old USB flash drive, copy them into the "MySpectra" folder of the new USB flash drive. Create the MySpectra- folder manually to the root of USB flash drive in case it does not already exist.

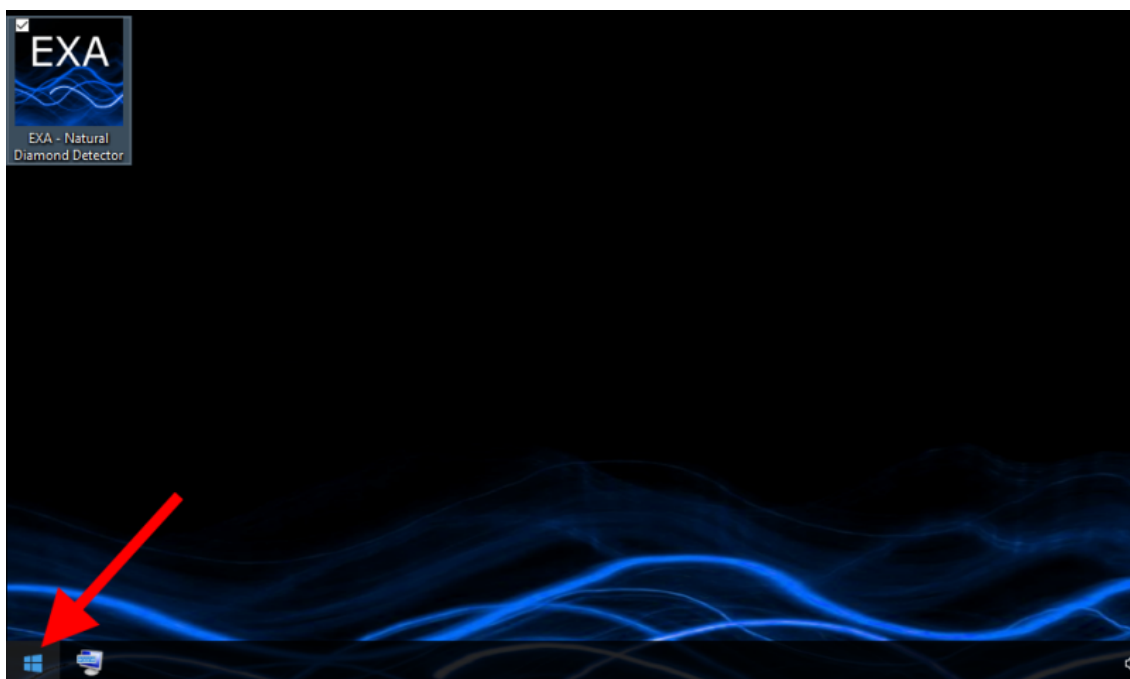
Before to start the software updating on your EXA/J-Screen it's necessary to plug a mouse into the USB port of the unit to make the installation process easier.

5. Plug the USB flash drive into your EXA/J-Screen.

6. Turn on your EXA/J-Screen.

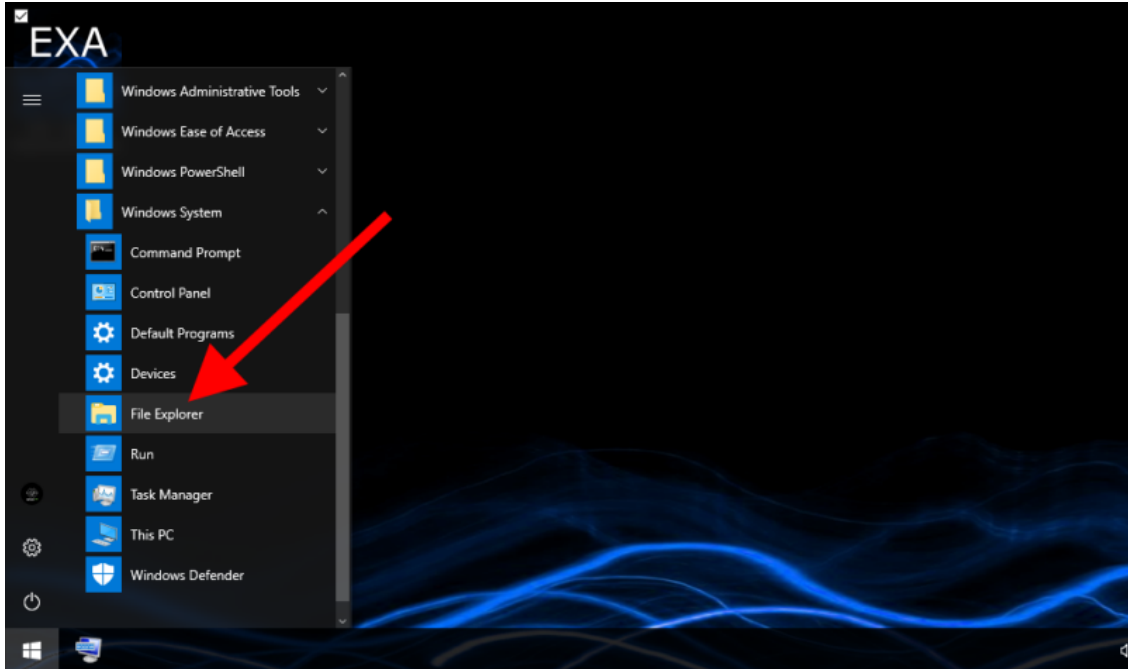


8. Tap the windows icon on the bottom-left corner of the screen

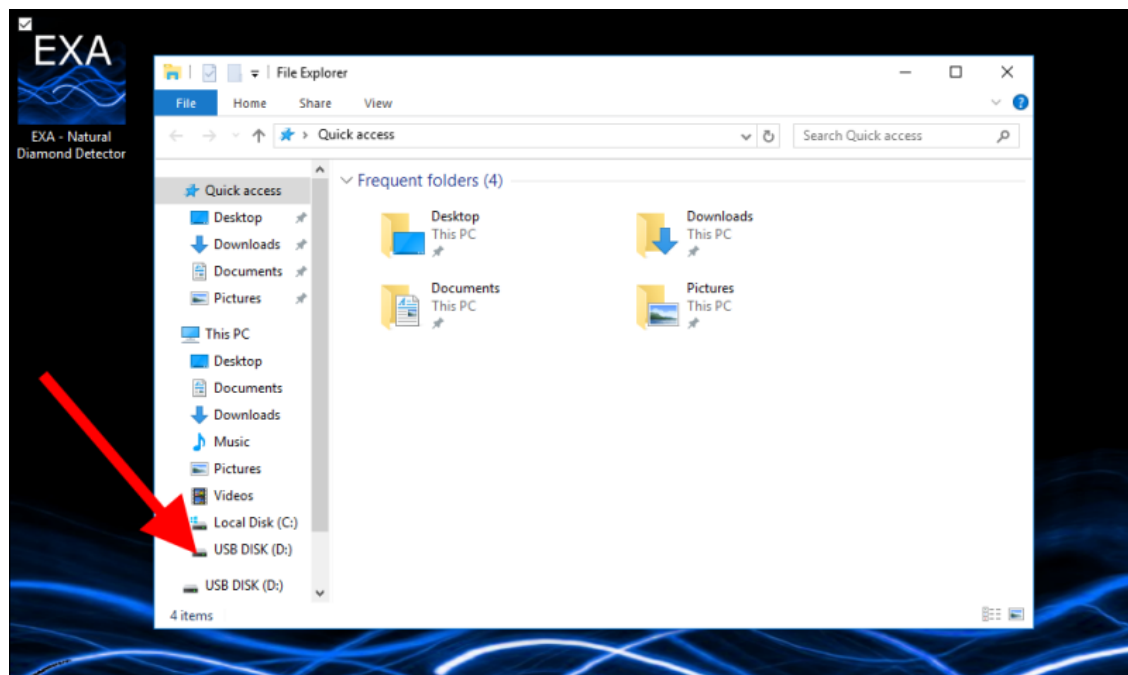


9. Open the Windows system submenu.

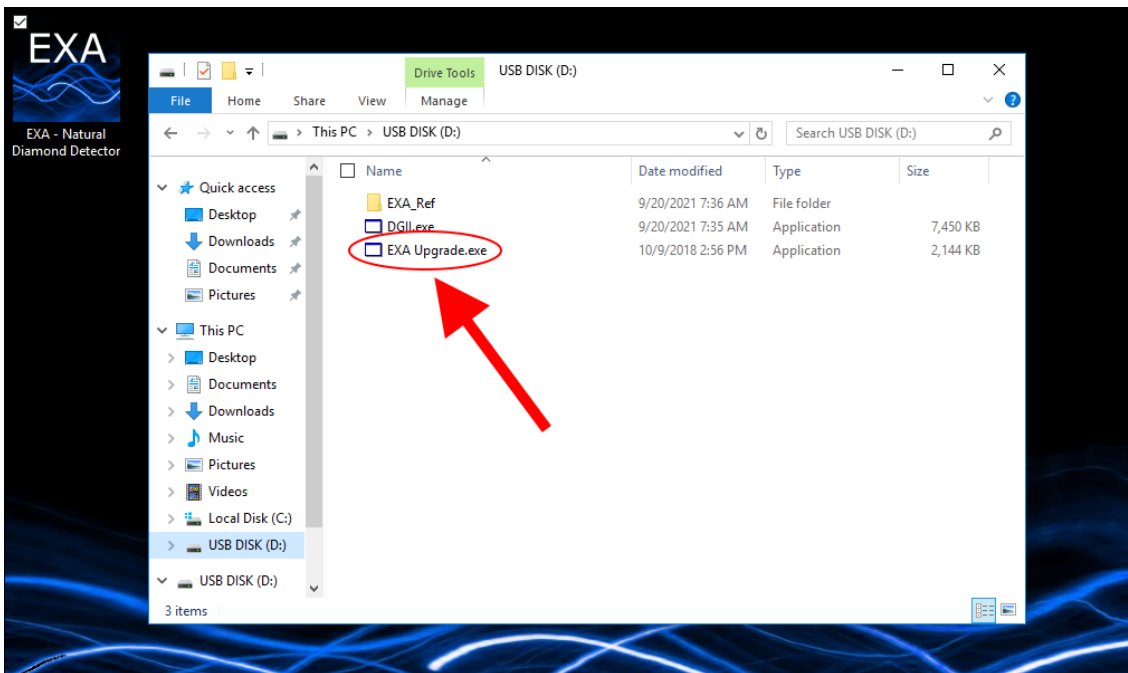
10. Launch the file explorer.



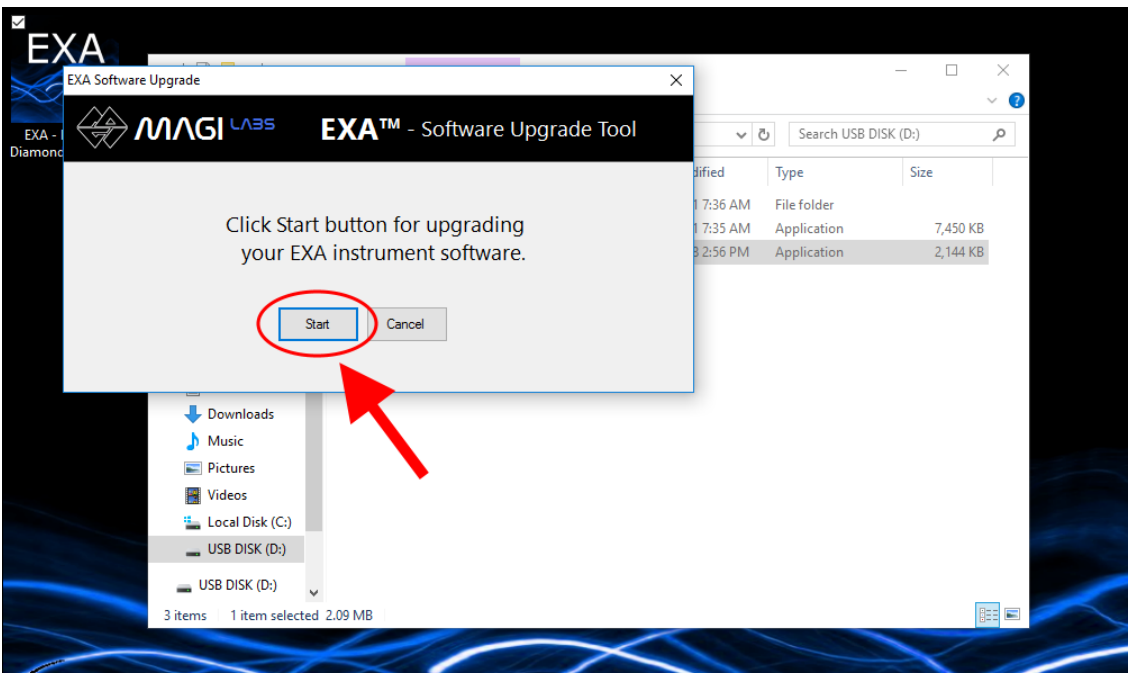
11. Open the content of the USB flash drive (D:/)



12. Launch the “EXA Upgrade.exe” file.



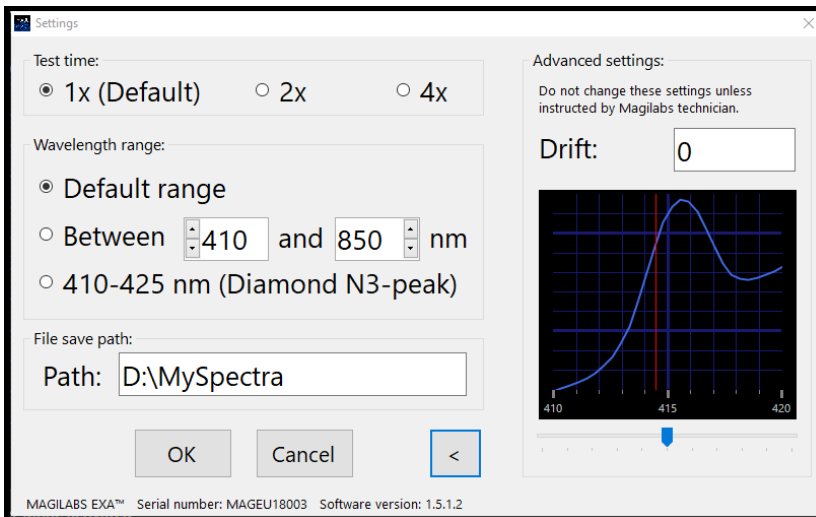
13. Click Start on the pop up menu.



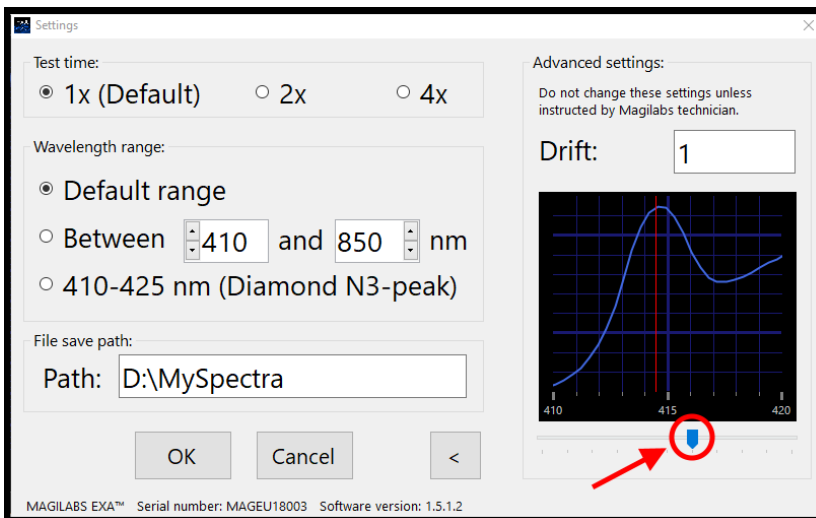
In few seconds the software will be updated. Now you can start using the unit again by clicking on the EXA/J-Screen icon on the desktop.

NEW FEATURE - Calibration

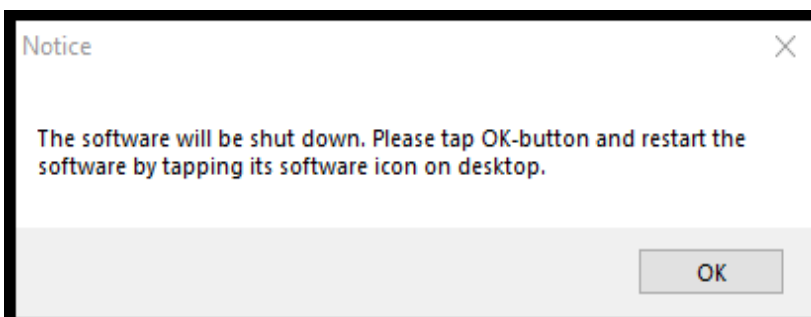
If it happens that, working in Pass/Refer mode, the percentage of refer inexplicably increases it is possible for the user to recalibrate the instrument by a simple procedure.



While testing a diamond featuring the 415 nm peak, open **Settings** menu and tap the **>** button at the bottom-right corner of the window. The **Advanced settings** menu on the right will open and a closeup of the 415 nm peak will be displayed.



If the red line in the center doesn't match the peak, move the sliding tool under the spectrum until it is aligned with the center of the peak. Click **OK** - button.

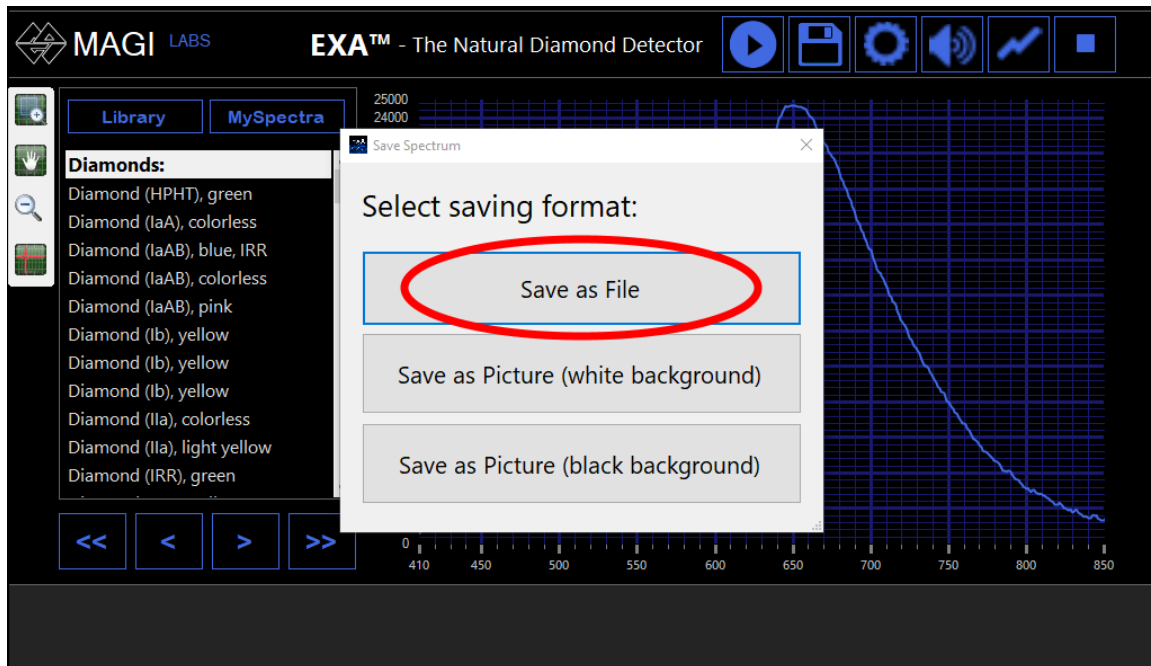


A new pop-up window will open warning that in order to finalize the calibration the software will be shut down and needs to be restarted by clicking the icon on the desktop.

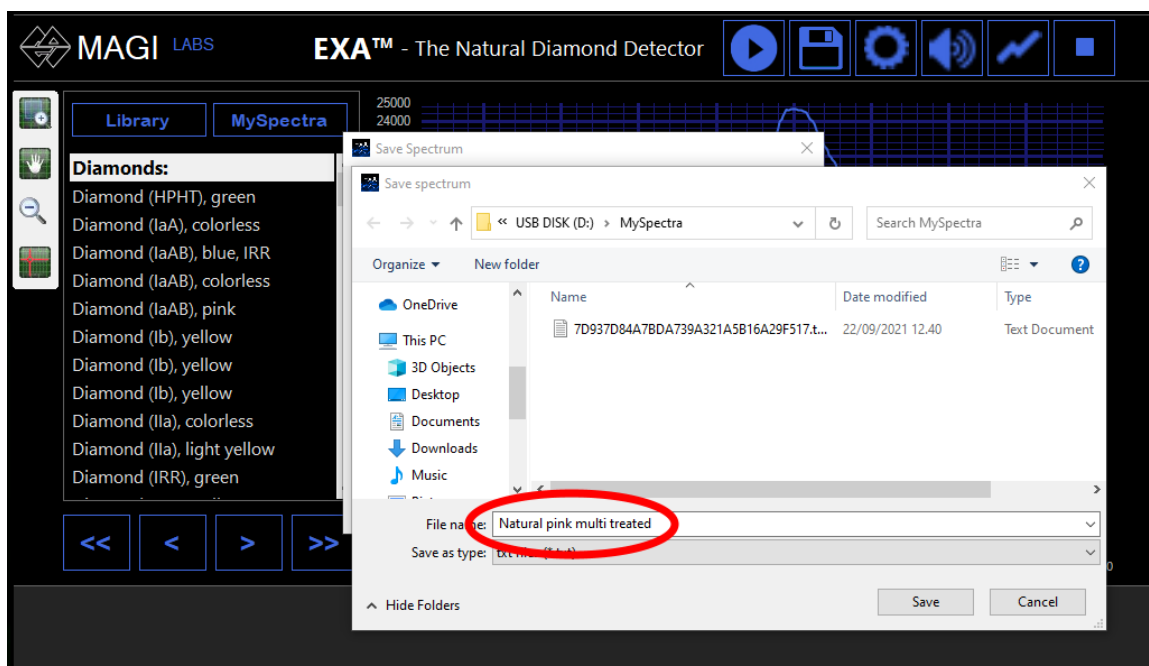
NEW FEATURE - Saving spectra



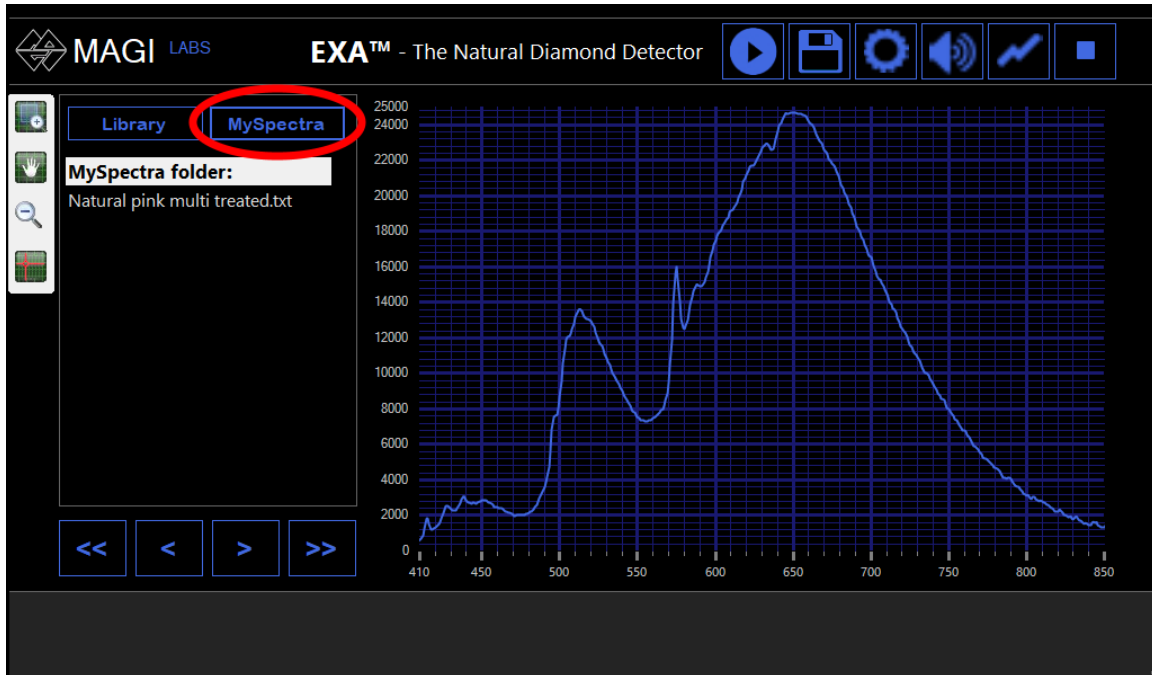
The currently active spectrum can be saved by tapping **Save**- tool while working in Advanced User Mode.



The spectrum can be saved as a file or as a picture (png format). The picture can be saved with either white or black background depending on its intended use. Tap the desired saving format.

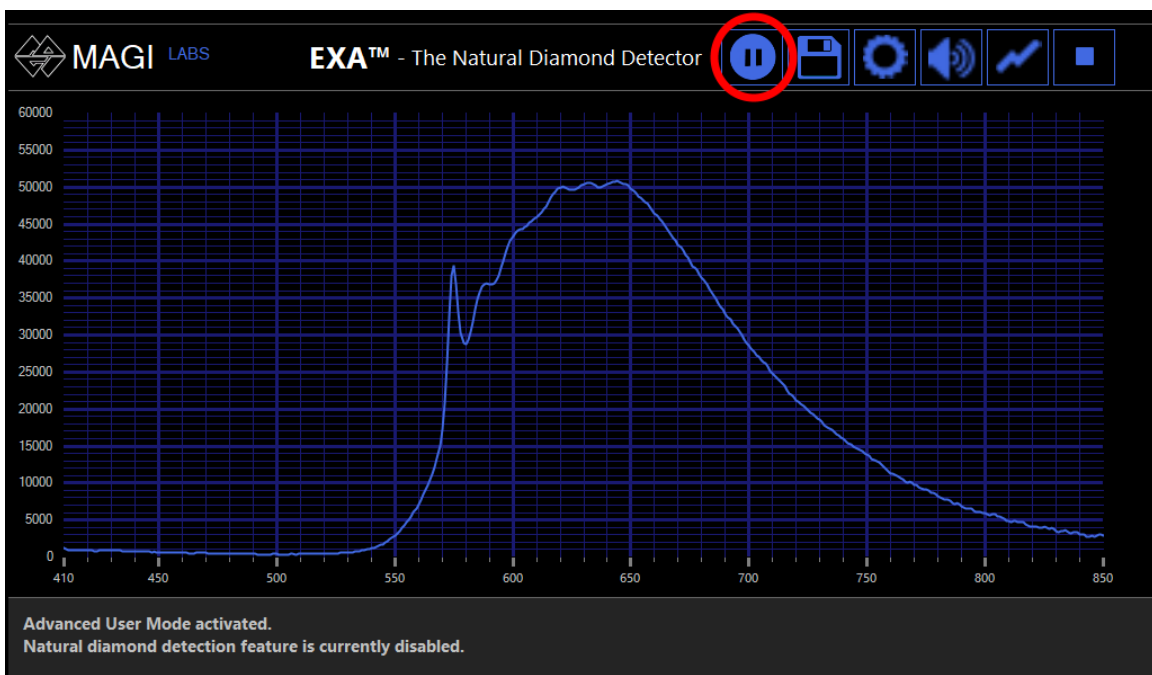


The file saving dialog window will be displayed. The default location is *D:\MySpectra*. The location can be changed but only the spectra saved in the MySpectra folder can be opened later in the software. A random file name will be given automatically but can also be changed before executing the Save action.

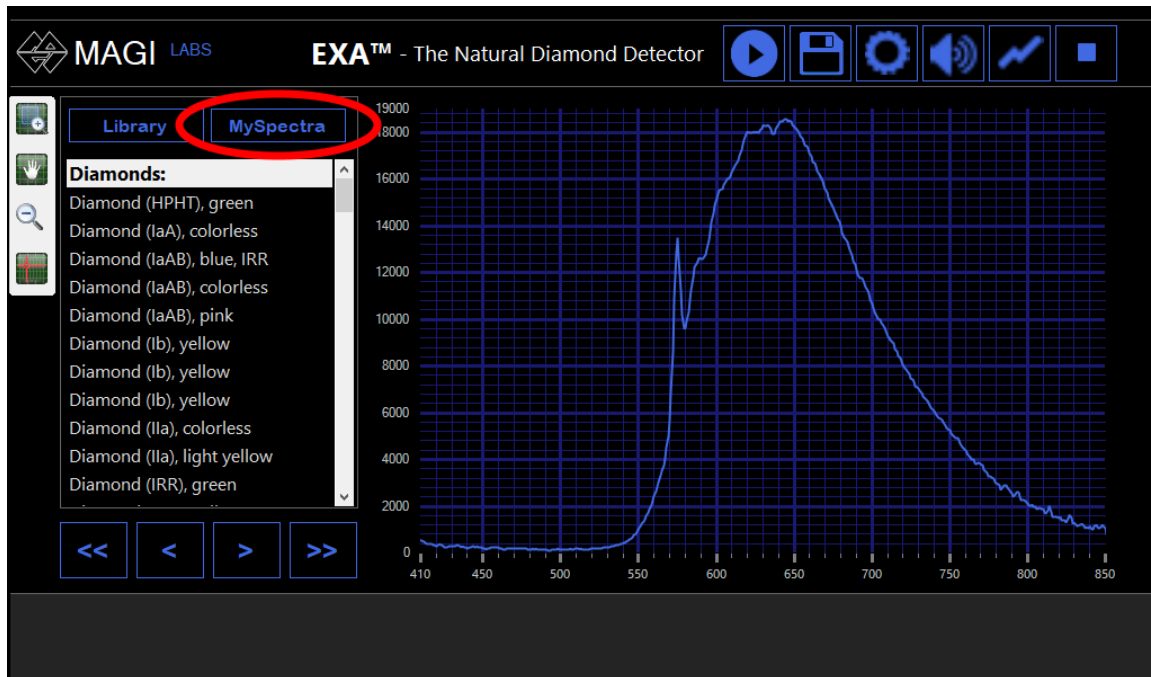


NEW FEATURE - Accessing saved spectra

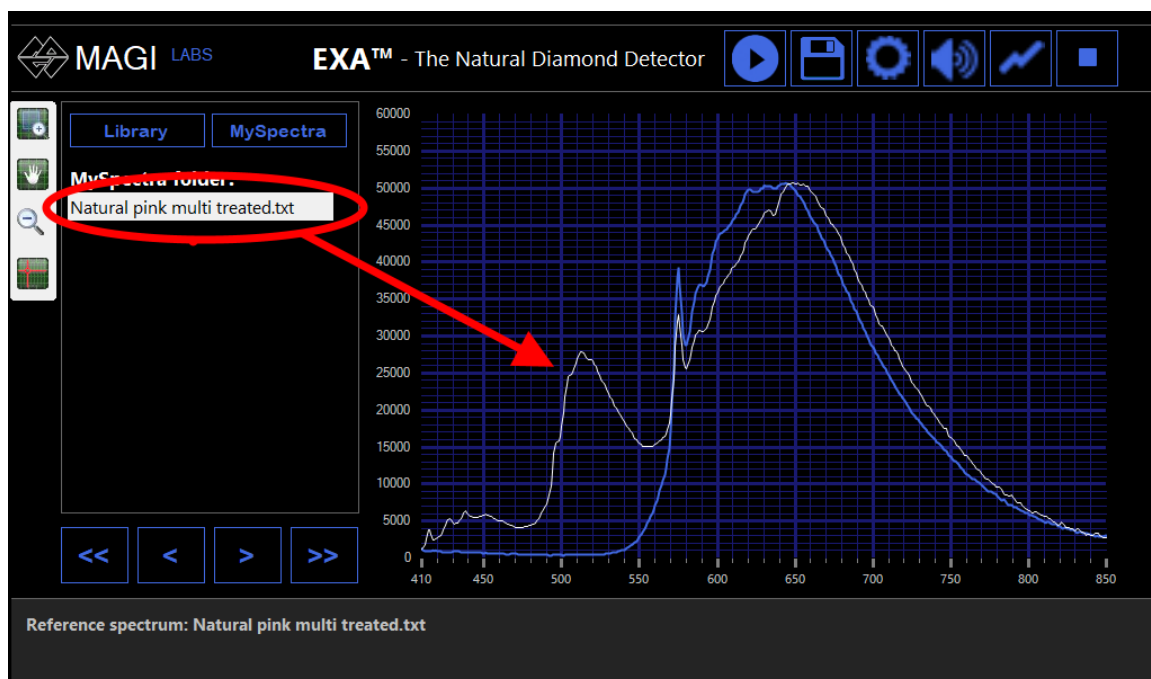
The database of saved spectra can be opened at any moment pausing the instrument by tapping the *Pause* icon.



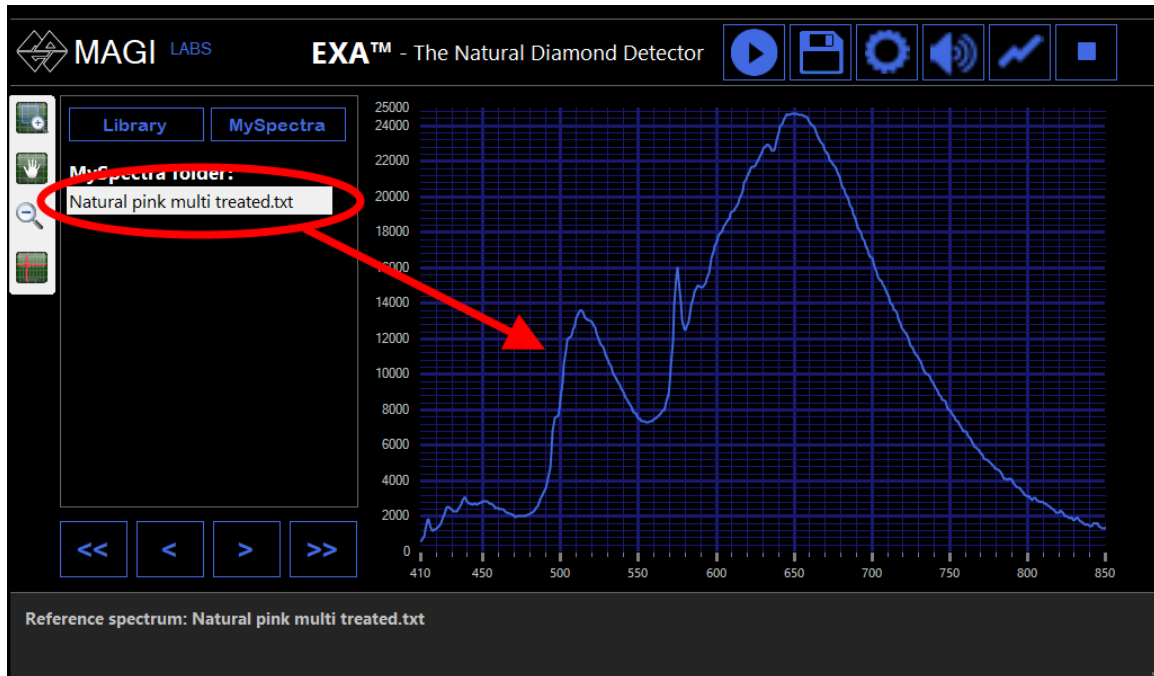
The EXA Library will open by default, the saved spectra folder can be opened by clicking on the *MySpectra* button.



By clicking spectrum file name one, a saved spectrum will open in white color on the screen overlapping the current Spectrum (blue color) as a reference for comparison purposes.



By double-click on spectrum file name, the saved spectrum will be displayed alone on the screen in blue color.



The EXA will switch back in scanning mode acquisition after tapping the *Resume* icon on the touch screen



Important!

The operating system of EXA™ is protected. Any changes made to computer will not be available after restarting the system. Save files only to external USB flash drive or create new folder(s) under C:/MAGI- path. Only files saved to these locations are available after restating the computer